

Original Manufacturer Medical Batteries



45 NEW BATTERIES ADDED



**AirSep Freestyle
Portable Oxygen
Concentrator (Internal)**

Part Number 02225

Original No. BT015-1



**Baxter Colleague
Infusion Pump**

Part Number 02124

Original No. MD12020



**AirSep Freestyle
Portable Oxygen
Concentrator AirBelt
(Includes Battery)**



Part Number 02226

Original No. BT014-1



**B.Braun Infusomat
Space/Perfusor Space
Infusion Pump**

Part Number 02127

Original No. 8713180

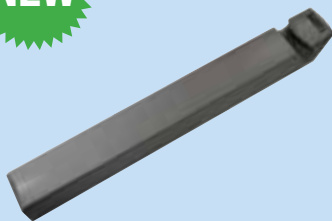


**Arjo Hoist Opera/
Tempo/Encore/
Sara/Maximove**



Part Number 02277

Original No. KPA0100



**B.Braun Aesculap
Acculan 2 Sternum
Saw**



Part Number 02257

Original No. GA646



**Atmos Atmoport
N Suction Pump**



Part Number 02268

Original No. 312.0425.0



**B.Braun Aesculap
Acculan 2 Sternum
Saw**



Part Number 02272

Original No. GA616



**Bard Site Rite 2
Ultrasound**

Part Number 02135

Original No. 8001C0775



**B.Braun Aesculap
Acculan 3Ti Sternum
Saw**



Part Number 02241

Original No. GA676



**B & D Electromedical
0913 Ventilator
(Internal)**

Part Number 02230

Original No. 0913



**Cardiac Science
Powerheart AED G5**



Part Number 02284

Original No. XBTAED001A



**Cardiac Science
First Save AED G3
(Non-Rechargeable battery)**

Part Number 02084

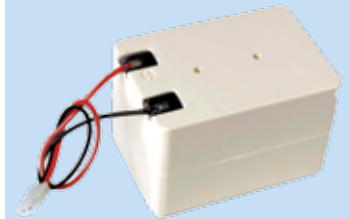
Original No. 9143-001/
9143-101



**CareFusion
560/565/570/572
Infusion Pump**

Part Number 02157

Original No. 132412



**Cardiac Science
Powerheart AED G3
(Non-Rechargeable battery)**

Part Number 02139

Original No. 9146-001/
9146-102/
9146-202/
9146-302



**CareFusion
580/591/597/598
Infusion Pump**

Part Number 02158

Original No. 129471



**Cardiac Science
Powerheart AED G3 Pro
(Non-Rechargeable battery)**

Part Number 02125

Original No. 9145-001/
9145-101



**CareFusion/Alaris
Asena Syringe Pump
GH/CC/PK**

Part Number 02133

Original No. 1000SP01122/
1000SP01080



**Cardiac Science
Powerheart AED G3 Pro
(Rechargeable battery)**

Part Number 02165

Original No. 9144-001/
9144-101



**CareFusion GP Pump/
Large Volumetric Pump**

Part Number 02126

Original No. 1000SP01302/
1000SP00487/
1000SP00605



**CareFusion GW
Volumetric Pump**

Part Number 02161

Original No. 1000EL00349



**CME Medical
BodyGuard 545/575
Epidural Infusion Pump**



Part Number 02229

Original No. 130-050XA



**CareFusion PC1
Gemini Volumetric
Pump**

Part Number 02155

Original No. 841027



**Codan Argus 707
Infusion Pump -
AG Model**



Part Number 02236

Original No. 10.119



**CareFusion PC2
Gemini Volumetric
Pump**

Part Number 02154

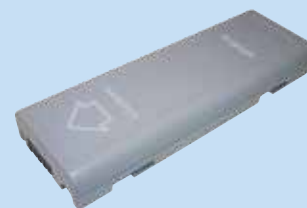
Original No. 841026



**Datascope/Mindray
Accutorr+/V/DPM3/4/5/
Passport 2/V/PM8000/
PM9000/Spectrum/Trio
Monitor**

Part Number 02100

Original No. 0146-00-0099/
0146-00-0069



**CareFusion Signature
Gold Edition Infusion
Pump**

Part Number 02156

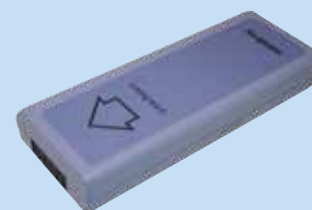
Original No. 141780



**Datascope/Mindray
Duo Monitor**

Part Number 02118

Original No. 0146-00-0079



**Casmed CAS740/750
Vital Signs Monitor**



Part Number 02263

Original No. 03-08-0450



**Datascope/Mindray
VS800 Monitor**

Part Number 02224

Original No. 0146-UK-0043



**Datex/Ohmeda
Trusat Oximeter**

Part Number 02112

Original No. 6050-0006-578



**Draeger Oxylog
2000+/3000/3000+
Ventilator (Lithium Ion)**

Part Number 02164

Original No. 2M86733



**Datex/Ohmeda
S5 Light Monitor**

Part Number 02167

Original No. 896895-HEL



**Draeger Evita 4/XL/
Dura Ventilator
(2 Batteries Required)**

Part Number 02162

Original No. 1843303



**Draeger Delta/Delta XL/
Gamma/Gamma XL/
SC6802XL/SC6002XL/
Vista Monitor (Internal)**

Part Number 02160

Original No. 5732354



**Dynavox M3/V/V+
Communication Device**



Part Number 02238

Original No. 200614



**Draeger Delta/
Gamma Monitor
(External)**

Part Number 02163

Original No. 5592097



**Fischer Zoth Natus Echo
Hearing Screener**

Part Number 02215

Original No. FZ1089/
FZ-ACCU-T



Draeger NIV Ventilator



Part Number 02271

Original No. 5703153-05



**Fresenius Compoguard
Blood Processing
Equipment**

Part Number 02234

Original No. 9029501



Fresenius Injectomat Syringe Pump

Part Number 02209

Original No. Z178130



GE Carescape V100 Monitor

Part Number 02189

Original No. 2037103-016



Fukuda Denshi Cardimax ECG FX-7402



Part Number 02249

Original No. 8/HRY-4/3AFD



GE Dash 3000/4000/5000 Patient Monitor

Part Number 02111

Original No. 2017857-002



Fukuda Denshi CardiMax FX-7102 Electrocardiograph



Part Number 02242

Original No. 8PH-4/3A
3700-H-J18



GE Dinamap MPS 722X Monitor

Part Number 02108

Original No. 633153/
300955



Fukuda Denshi DS7100 Dynascope Bedside Monitor



Part Number 02264

Orig No. T4UR18650F-2-4644



GE Dinamap Pro 100-400 BP Monitor

Part Number 02106

Original No. 633132



GE AED Responder Pro

Part Number 02205

Original No. 2023681-101/
2023681-001/
2023681-301



GE Logiq E/Logiq I/ Vivid E Ultrasound

Part Number 02212

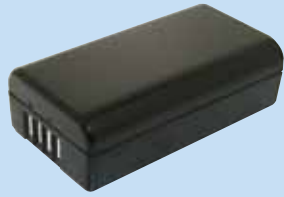
Original No. 5120410-2



**GE Mac
400 ECG**

Part Number 02192

Original No. 2030912-001



**GE Responder
2000 Defib**

Part Number 02206

Original No. 2025267-001



**GE/Marquette
MAC 1600 EKG**

Part Number 02172

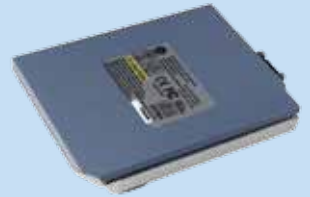
Original No. 2035701-001/
2032095-001



**GE Vivid I
Ultrasound**

Part Number 02152

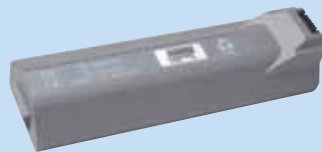
Original No. 2378963-2



**GE/Marquette
Mac 3500/5000/5500
ECG**

Part Number 02110

Original No. 900770-001



**GE Voluson E/Voluson I
Ultrasound**

Part Number 02207

Original No. KTZ302054/
KTZ220278



**GE/Marquette
Responder
3000 Defib**

Part Number 02171

Original No. 2009218-001/
30344631



**Heine
Accubox II**

Part Number 02186

Original No. X-04.99.641/
X-04.99.624



**GE Patient Data Module
(PDM) Monitor**

Part Number 02149

Original No. 2031069-003/
2016989-002



**Heine Nica Tron N
Laryngoscope**



Part Number 02255

Original No. X-001.99.433



**Heine M2Z
Ophthalmoscope**

Part Number 02089

Original No. D-01.89.013



**Innomed Medical
Cardioaid
200B Defib**

Part Number 02222

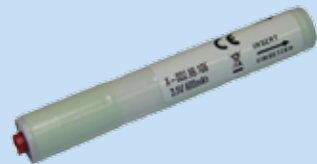
Original No. R-2003-1



**Heine M3Z
Ophthalmoscope**

Part Number 02235

Original No. X-02.99.106



**Inogen One 10-100
Oxygen Concentrator**



Part Number 02275

Original No. BA-100



**Heine MPack
Ophthalmoscope**

Part Number 02170

Original No. X-007.99.676



**Jolife/Physio Control
Lucas 2 Chest
Compression System**



Part Number 02251

Original No. 11576-000039



**Heine
Ophthalmoscope**

Part Number 02004

Original No. X-02.99.382



**Keeler
Ophthalmoscope**

Part Number EE470009

Original No. EP39-18918



**Heine S3Z
Ophthalmoscope**

Part Number 02006

Original No. X-02.99.314



**Keeler Wireless
Indirect
Ophthalmoscope**

Part Number 02115

Original No. 1919-P-1013



**Keeler Spectra
Plus Indirect
Ophthalmoscope**

Part Number 02228

Original No. EP39-33907



**Martek DCF-200
Lifeline AED Standard
Battery Pack**

Part Number 02274

Original No. DBP-1400



**Kenz Cardico 302
ECG Recorder**



Part Number 02259

Original No. C302/
HHR-20AF25GI



**Masimo
Radical 7 Pulse
Oximeter**

Part Number 02216

Original No. 1315



Kenz ECG 108



Part Number 02270

Original No. 382-235748/
HHR-12F25GI



**Medela Vario
Suction Pump**

Part Number 02217

Original No. 919.0012



**Laerdal
Suction Unit
(Ni-MH Battery)**

Part Number 02276

Original No. 780800



**Medtronic/Physio
Control Lifepak 12
(Lithium) Mon/Defib**

Part Number 02208

Original No. 11141-000106



**Maquet Servo I
Ventilator**

Part Number 02105

Original No. 64-87-180



**Medtronic/Physio
Control Lifepak 12-NiCd
Mon/Defib**

Part Number 02159

Original No. 11141-000149



**Medtronic/Physio
Control Lifepak 12-SLA
Mon/Defib**

Part Number 02066

Original No. 11141-000028



**Medtronic/Physio
Control Lifepak 500 AED
(Sealed Lead Acid)**



Part Number 02265

Original No. 11141-000002



**Medtronic/Physio
Control Lifepak 15
Mon/Defib**

Part Number 02141

Original No. 21330-001176



**Medtronic/Physio
Control Lifepak 1000
AED**

Part Number 02107

Original No. 11141-000100



**Medtronic/Physio
Control Lifepak 20
Mon/Defib**

Part Number 02120

Original No. 11141-000068



**Medtronic/Physio
Control Lifepak
CR+ AED
(With 1 Set of Electrodes)**

Part Number 02117

Original No. 11403-000002



**Medtronic/Physio
Control Lifepak 20E
Mon/Defib**

Part Number 02142

Original No. 11141-000112



**Medtronic/Physio
Control Lifepak
CR+ AED Battery
(With 2 Sets of Electrodes)**



Part Number 02248

Original No. 11403-000001



**Medtronic/Physio
Control Lifepak 500 AED
(Lithium Battery)**

Part Number 02109

Original No. 11141-000158/
11141-000013/
11141-000147



**Mindray MEC 1000
Monitor**



Part Number 02254

Original No. M05-302R3R---



**Mindray PM60
Pulse Oximeter**

Part Number 02184

Original No. M05-010004-08



**Nihon Kohden
Cardiolife AED 2100
Series (Until SN: 5000,
2 Years Standby Battery)**

Part Number 02280

Original No. X212A/
SB-210VK



**Molift Quickraiser
Hoist**



Part Number 02267

Original No. 0541000



**Nihon Kohden
Cardiolife AED 2100
Series (Starting SN: 5001,
2 Years Standby Battery)**

Part Number 02281

Original No. X216A/
SB-212VK



**Nihon Kohden
BSM2300/BSM2351K/
Lifescope I/L Monitor**

Part Number 02199

Original No. X062/
YS-076P5



**Nihon Kohden
Cardiolife AED 2100
Series (Starting SN: 5001,
4 Years Standby Battery)**

Part Number 02282

Original No. X217A/
SB-214VK



**Nihon Kohden
BSM3000/6000/6301K/
WEP-520x Monitor**

Part Number 02221

Original No. X075/
SB-671P



**Nihon Kohden
ECG1350/TEC5500/5521/
5531/7600/7621/7631/
7700/7721/7731**

Part Number 02200

Original No. X065/
NKB-301V



**Nihon Kohden
BSM4000 Lifescope P/
BSM5100 Lifescope A
Mon/Defib**

Part Number 02198

Original No. X060/
NKB-101



**Nihon Kohden
ECG8110/ECG6511**

Part Number 02196

Original No. X040/
LCS-2012NK



Nihon Kohden
**ECG8820K/8830/9010/
 9020/9022/9110/9130/
 9132**

Part Number 02197

Original No. X041A/
 LCT-1912ANK



Nihon Kohden
TEC2202/2203/8200
ECG

Part Number 02279

Original No. X060A/
 NKB-102V


NEW



Nihon Kohden
ECG1150/1250/9620

Part Number 02195

Original No. X071/
 SB-901D



Nihon Kohden
OLV-2700/OLG-2800
Monitor

Part Number 02287

Original No. X072/
 YS-085P6



Nihon Kohden
ECG1500/1550

Part Number 02278

Original No. X073/
 SB-150D

NEW



Pari Boy Mobile S
Nebuliser

Part Number 02247

Original No. 047G2000

NEW



Nihon Kohden
Lifepulse OPV-1500K
Vital Signs Monitor

Part Number 02273

Original No. X064/
 NKB-302


NEW



Philips Heartstart
Forerunner BT1 AED
(Non-Rechargeable Battery)

Part Number 02104


Original No. BT1/
 989803102301



Nihon Kohden
PVM-2701/2703
Monitor

Part Number 02227

Original No. X076/
 SB-201P



Philips
FR3 AED
(Non-Rechargeable Battery)

Part Number 02210

Original No. 989803150161



**Philips Heartstart
FRx/HS1 AED
(Non-Rechargeable Battery)**

Part Number 02136

Original No. M5070A/
989803121381



**Philips IntelliVue
MP2/X2 Monitor
(Rechargeable Battery)**

Part Number 02130

Original No. M4607A/
989803148701



**Philips Heartstart
FR2 + AED
(Non-Rechargeable Battery)**

Part Number 02102

Original No. M3863A/
989803108811



**Philips IntelliVue
MP20/MP30/MP40/
MP50 Monitor
(Rechargeable Battery)**

Part Number 02103

Original No. M4605A/
989803135861



**Philips Heartstart MRX
Mon/Defib
(Rechargeable battery)**

Part Number 02113

Original No. M3538A/
989803129011



**Philips IntelliVue
MX40 Monitor
(Rechargeable Battery)**

Part Number 02214

Original No. 989803174131



**Philips Heartstart
XL/XLT Mon/Defib
(Sealed Lead Acid
Rechargeable Battery)**

Part Number 02101

Original No. M3516A/
989803107041



**Philips Pagewriter Series
TC30/50/70/860306/
860310/860315 ECG
(Rechargeable Battery)**

Part Number 02191

Original No. 989803170371



**Philips Heartstart
XL+ Defib/Mon 861290
(Lithium Ion Rechargeable
Battery)**

Part Number 02211

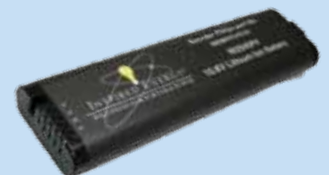
Original No. 989803167281



**Philips Pagewriter
Touch EKG
(Rechargeable Battery)**

Part Number 02137

Original No. 989803129131



**Philips Pagemwriter Trim
I/II/III EKG
(Rechargeable Battery)**

Part Number 02116

Original No. 989803130151



**Primedic EC01/DM/
Defib M240**

Part Number 02187

Original No. 96330



**Philips Suresigns
VS2/VS3/VM4/VM6/VM8
Monitor
(Rechargeable Battery)**

Part Number 02147

Original No. 989803144631



**Primedic Handyscan
Ultrasound**



Part Number 02261

Original No. 20325/
96317



**Poosum Freedom
Intercom HC516B**

Part Number 02190

Original No. 131-213



**Primedic HeartSave
3 PAD/M250 Defib**

Part Number 02202

Original No. 96790



**Primedic AkuPak Lite
Heartsave 6/6S/AED-M/
M250/M290 AED**

Part Number 02243

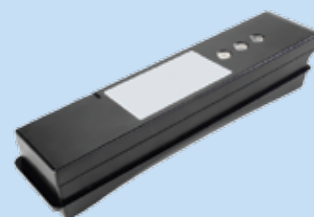
Original No. 97196



**Primedic HeartSave
6/6S/AS/AED-M/M250**

Part Number 02203

Original No. 96338



**Primedic Defi-B
Model M110**

Part Number 02201

Original No. 96708



**Propaq/Welch Allyn
802LTRN Monitor**

Part Number 02148

Original No. 008-0857-00



**Riester Ri-Accu
(Plug Handle)**



Part Number 02266

Original No. RI-10692

**Schiller AT2/AT2+/
AT102/CS200 Excellence/
Argus LCM ECG**



Part Number 02181

Original No. 4.350023

**Riester Ri-Scope LED
(Plug Handle)**



Part Number 02223

Original No. 10683

**Schiller Defigard 5000
Defib.**



Part Number 02246

Original No. 2.200132

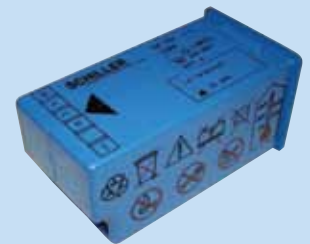
**Riester Ri-Scope
(C Type Handle)**



Part Number 02233

Original No. 10682

**Schiller FRED
Easy Defib**



Part Number 02140

Original No. Easybat

**Schiller AT1/AT101
ECG**



Part Number 02180

Original No. 4.350024

**Schiller FRED
Easyport Defib**



Part Number 02146

Original No. SCH2.230292

**Schiller AT10+
ECG**



Part Number 02176

Original No. 3.920511

**Schiller FRED Defib
(Rechargeable Battery)**



Part Number 02168

Original No. U16006/
BUFRNC

**Sonosite
180 Plus Ultrasound/
Sonoheart Elite**

Part Number 02183

Original No. P00049-02/
P00049-03/
P00049-04



**Stryker
Large System 6 Drill**



Part Number 02256

Original No. 6215-000-000

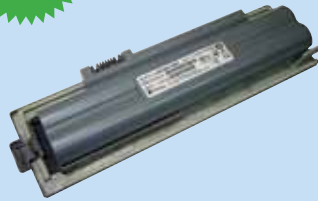


**Sonosite S-Fast
Ultrasound**



Part Number 02269

Original No. P07753



**Stryker
System 6 Non-Sterile
Drill**



Part Number 02253

Original No. 6126-110

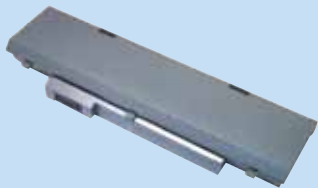


**Sonosite Micromaxx/
M-Turbo/Titan
Ultrasound**



Part Number 02245

Original No. P07168



**Stryker Small
System 6 Drill**



Part Number 02283

Original No. 6212-000-000



**Stryker
4112 Cordless Driver**



Part Number 02258

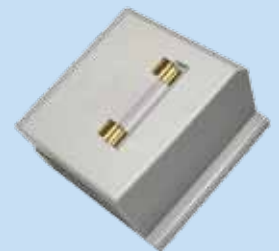
Original No. 4112



**Verathon BVI3000
Bladderscan**

Part Number 02131

Original No. 0400-0039



**Stryker
4115 Drill**



Part Number 02244

Original No. 4115



**Welch Allyn 72300
(Orange) Audioscope 3
Screening Audiometer**



Part Number 02250

Original No. 72300



**Welch Allyn
AED10**

Part Number 02138

Original No. 00185-2



**Zoll AED Pro
(Non-Rechargeable Battery)**

Part Number 02213

Original No. 8000-0860-01



**Welch Allyn Connex
ProBP 3400 Digital
Blood Pressure Device**



Part Number 02252

Original No. BATT11



**Zoll AED PRO-
PD1400/1600/1700/
2000/4410/M Series**

Part Number 02119

Original No. 8000-0299-01

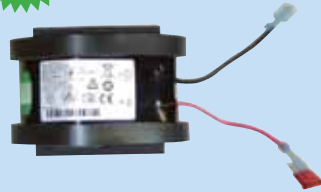


**Welch Allyn
CP100/CP200 ECG
(Includes Lithium Ion
Battery Upgrade Kit)**



Part Number 02260

Original No. 105204



**Zoll E & R Series AED
(Surepower Battery)**

Part Number 02153

Original No. 8019-0535-01



**Welch Allyn Lxi Spot
Vital Signs Monitor**

Part Number 02145

Original No. 4500-84



**Zoll
Auto Pulse**

Part Number 02169

Original No. 8700-0702-01



**Welch Allyn 719 Series
Li-ion Power Handle**

Part Number 02232

Original No. 71960



**Zoll M Defib
Series - XL Smart Ready
Battery without
Fuel Gauge**

Part Number 02129

Original No. 8000-0500-01

